

Light efficiency:

39 Lumen/Watt

Light quality:

CRI: 78.9

Color temperature:

3957 K

Output: 12822 lm

Peak: 53090 cd

Power: 326 W

PF: 1.0



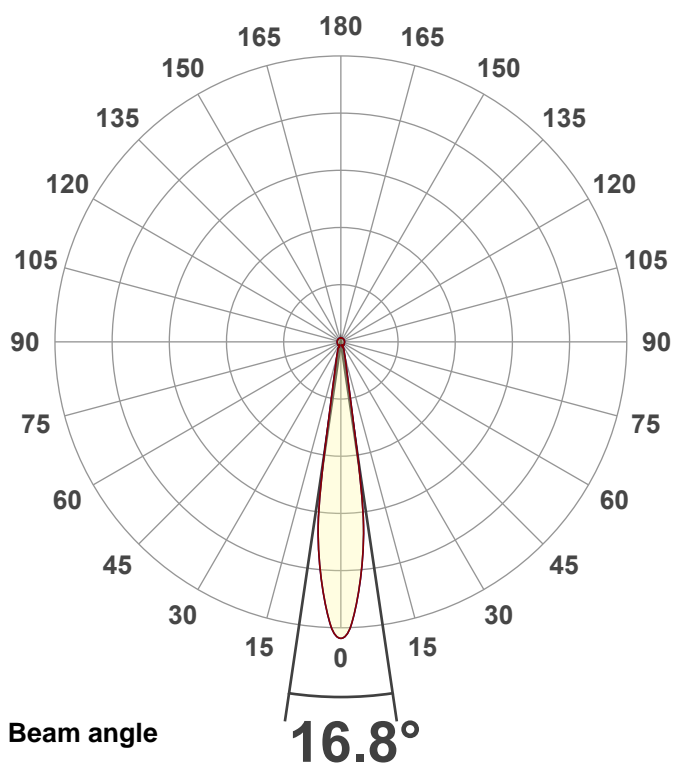
Product name:

Hydro Flex L7 (Zoom 50% 4000K)

Item number:

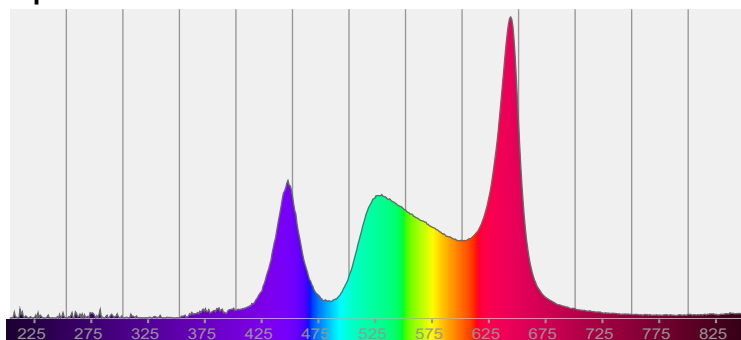
Date and time:

8/25/2025 3:54:49 PM



CIE 1931  
x: 0.381  
y: 0.371

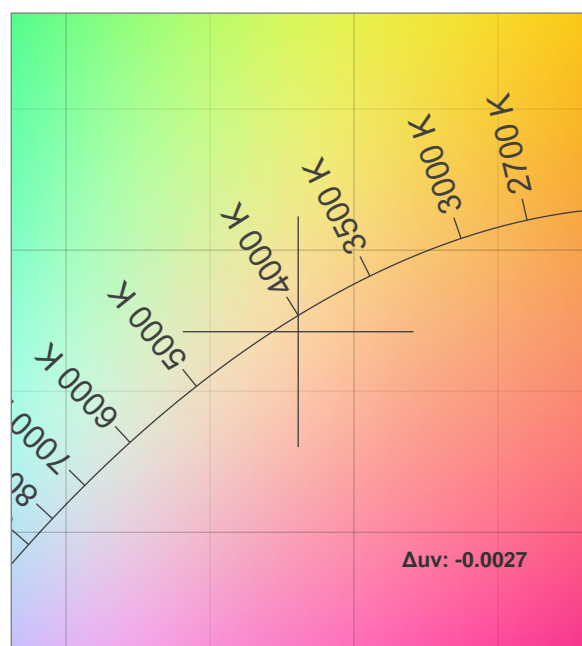
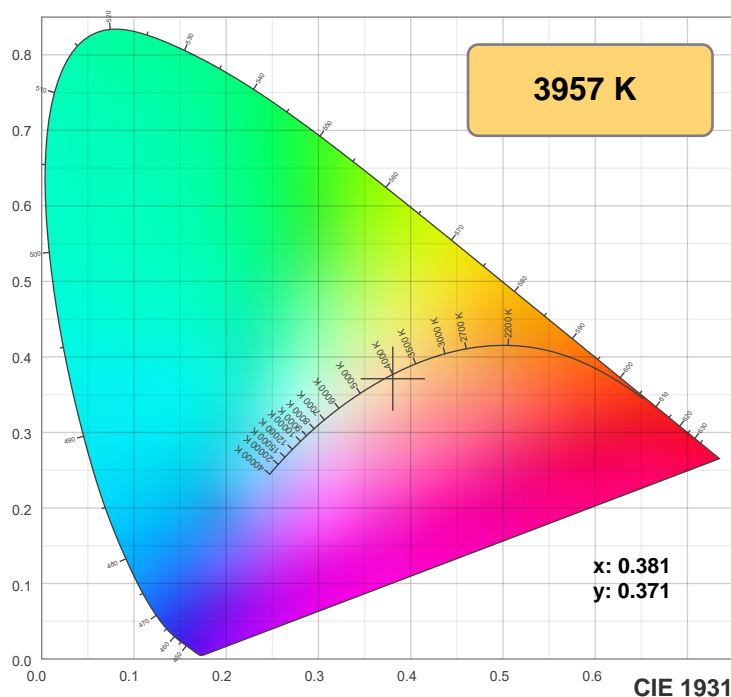
Spectra



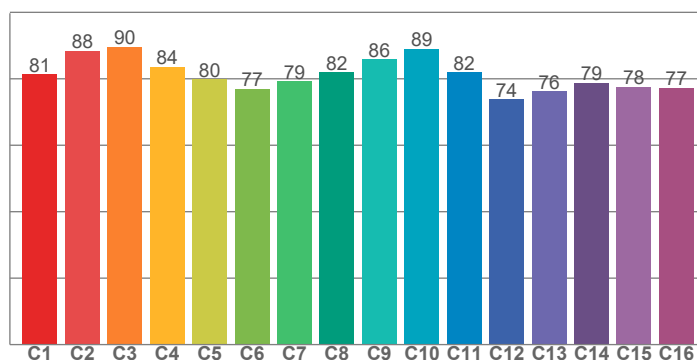
Power

Voltage: 115 V  
Current: 2.83 A  
Frequency: 0 Hz

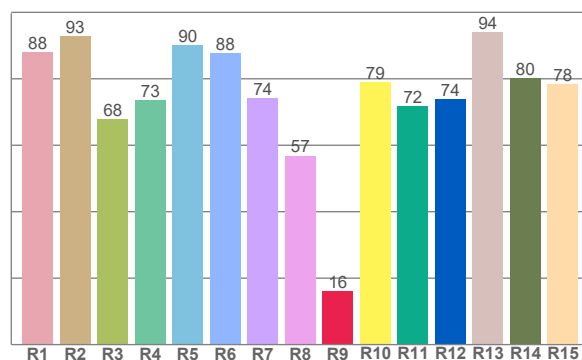
## Color details



**TM-30: 81.9**



**CRI: 78.9 (R1-R8)**



CRI R values, only R1-R8 are used to calculate final CRI value

R1	R2	R3	R4	R5	R6	R7	R8	R9	R10	R11	R12	R13	R14	R15
88.0	92.9	67.8	73.5	90.0	87.7	74.2	56.8	16.1	79.0	71.8	73.9	94.1	80.2	78.4

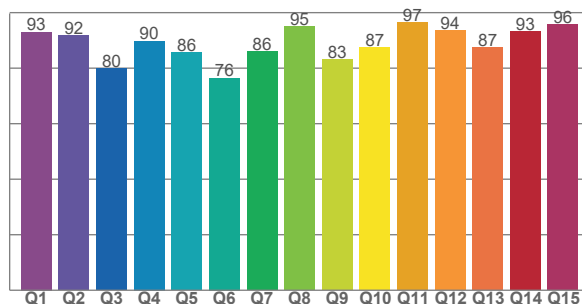
TM30 C values, 16 binned values out of total of 99 C values

C1	C2	C3	C4	C5	C6	C7	C8	C9	C10	C11	C12	C13	C14	C15	C16
81.3	88.4	89.6	83.6	79.9	77.0	79.2	81.9	85.9	89.0	81.9	73.8	76.2	78.7	77.6	77.3

CQS Q values

Q1	Q2	Q3	Q4	Q5	Q6	Q7	Q8	Q9	Q10	Q11	Q12	Q13	Q14	Q15
93.1	91.8	79.9	89.8	85.6	76.4	85.9	95.0	83.1	87.4	96.5	93.6	87.4	93.2	95.7

**CQS: 87.5**



### Color parameters

Color temperature	Color rendering index	Red component	Color fidelity	Color gamut	Color quality scale	Color coordinate cie 1931	Color coordinate cie 1931	Color coordinate	Color coordinate	Color deviation from black body
CCT	CRI	CRI R9	TM30 Rf	TM30 Rg	CQS	x	y	u	v	Δuv
3957 K	78.9	16.1	81.9	114.0	87.5	0.381	0.371	0.228	0.333	-0.0027

# TM-30 details

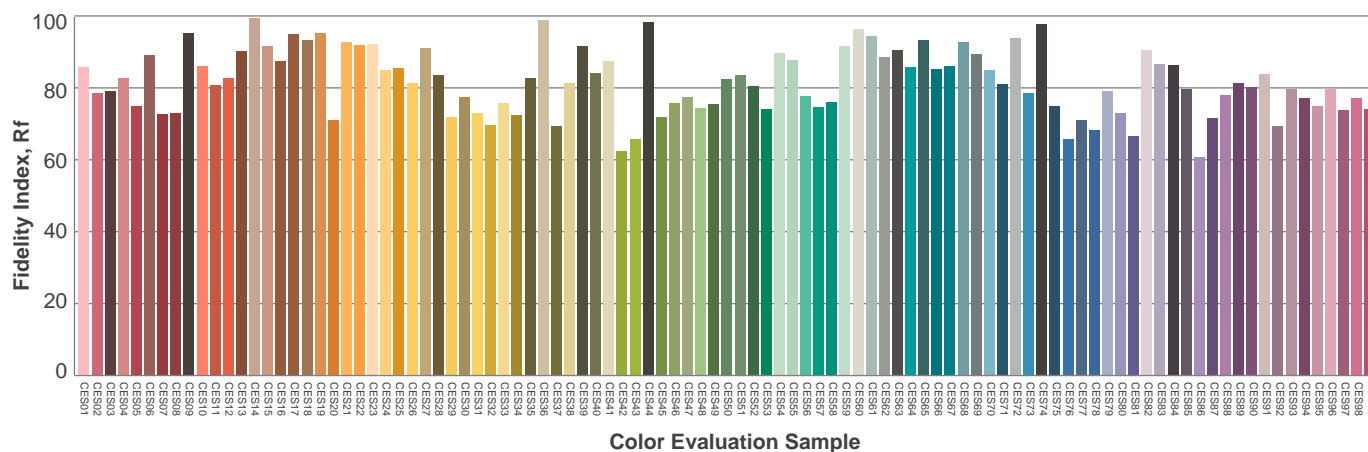
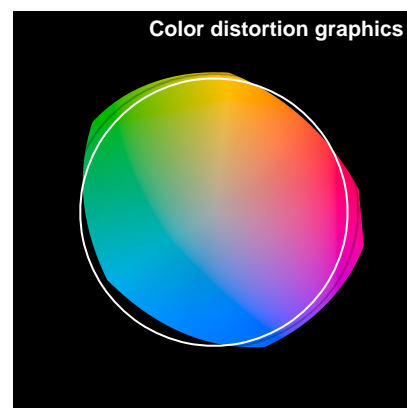
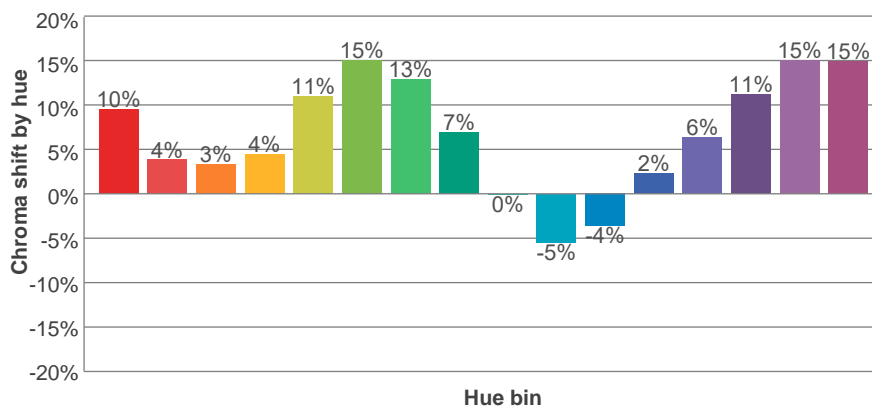
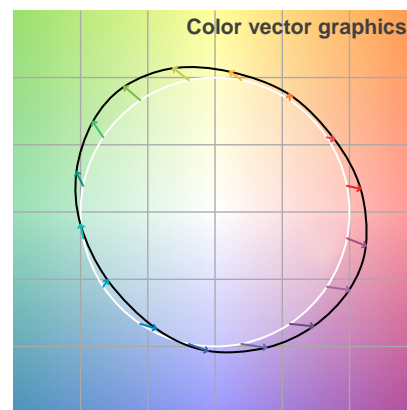
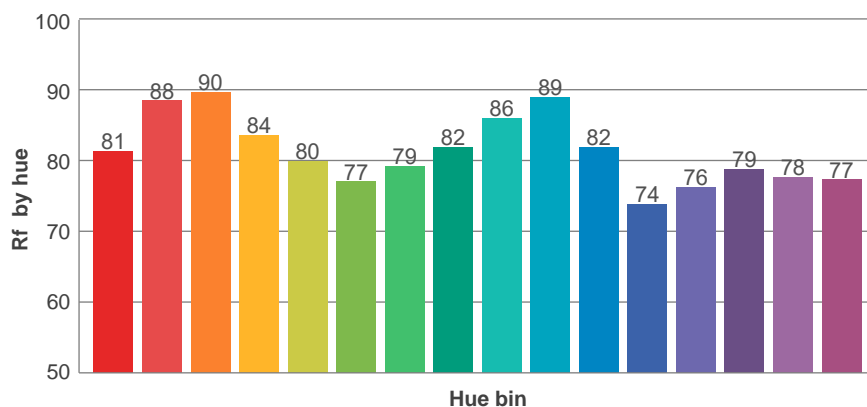
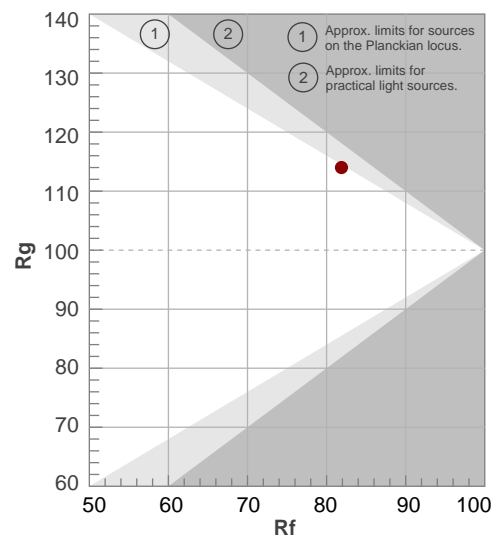
**Rf 81.9**

Fidelity index Rf

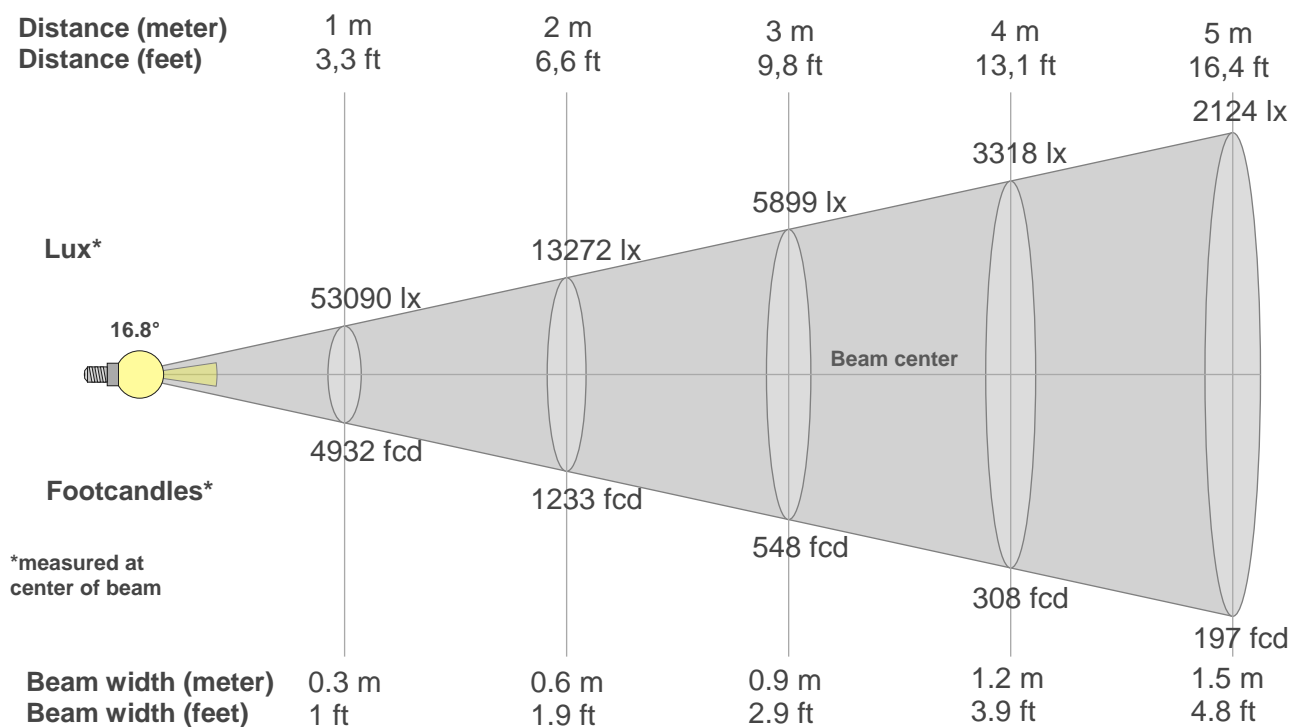
**Rg 114.0**

Gamut index Rg

Hue Bin	R <sub>f</sub>	Shifts (%)	
		Chroma	Hue
1	81	10%	-4%
2	88	4%	-4%
3	90	3%	3%
4	84	4%	9%
5	80	11%	10%
6	77	15%	4%
7	79	13%	-5%
8	82	7%	-9%
9	86	0%	-10%
10	89	-5%	-2%
11	82	-4%	12%
12	74	2%	15%
13	76	6%	18%
14	79	11%	14%
15	78	15%	7%
16	77	15%	-3%



## Beam details



### Beam intensities from 1-20m

1m	2m	3m	4m	5m	6m	7m	8m	9m	10m	11m	12m	13m	14m	15m	16m	17m	18m	19m	20m
3.3ft	6.6ft	9.8ft	13.1ft	16.4ft	19.7ft	23ft	26.2ft	29.5ft	32.8ft	36.1ft	39.4ft	42.7ft	45.9ft	49.2ft	52.5ft	55.8ft	59.1ft	62.3ft	65.6ft
53090lx	13272lx	5899lx	3318lx	2124lx	1475lx	1083lx	830lx	655lx	531lx	439lx	369lx	314lx	271lx	236lx	207lx	184lx	164lx	147lx	133lx
4932.2fcd	1233.1fcd	548fcd	308.3fcd	197.3fcd	137fcd	100.7fcd	77.1fcd	60.9fcd	49.3fcd	40.8fcd	34.3fcd	29.2fcd	25.2fcd	21.9fcd	19.3fcd	17.1fcd	15.2fcd	13.7fcd	12.3fcd

### Intensities in 0° c-plane

0°	1°	2°	3°	4°	5°	6°	7°	8°	9°	10°	11°	12°	13°	14°	15°	16°	17°	18°	19°
53.1k	53.1k	53.1k	49.5k	45.8k	42.1k	38.4k	34.7k	28.9k	22.9k	17.0k	11.1k	5.1k	4.2k	3.4k	2.5k	1.7k	0.9k	0.9k	0.8k
100%	100%	100%	93%	86%	79%	72%	65%	54%	43%	32%	21%	10%	8%	6%	5%	3%	2%	2%	2%

### Intensities in 90° c-plane

0°	1°	2°	3°	4°	5°	6°	7°	8°	9°	10°	11°	12°	13°	14°	15°	16°	17°	18°	19°
53.1k	53.1k	53.1k	49.5k	45.8k	42.1k	38.4k	34.7k	28.9k	22.9k	17.0k	11.1k	5.1k	4.2k	3.4k	2.5k	1.7k	0.9k	0.9k	0.8k
100%	100%	100%	93%	86%	79%	72%	65%	54%	43%	32%	21%	10%	8%	6%	5%	3%	2%	2%	2%

### Intensities in 180° c-plane

0°	1°	2°	3°	4°	5°	6°	7°	8°	9°	10°	11°	12°	13°	14°	15°	16°	17°	18°	19°
53.1k	53.1k	53.1k	49.5k	45.8k	42.1k	38.4k	34.7k	28.9k	22.9k	17.0k	11.1k	5.1k	4.2k	3.4k	2.5k	1.7k	0.9k	0.9k	0.8k
100%	100%	100%	93%	86%	79%	72%	65%	54%	43%	32%	21%	10%	8%	6%	5%	3%	2%	2%	2%

### Intensities in 270° c-plane

0°	1°	2°	3°	4°	5°	6°	7°	8°	9°	10°	11°	12°	13°	14°	15°	16°	17°	18°	19°
53.1k	53.1k	53.1k	49.5k	45.8k	42.1k	38.4k	34.7k	28.9k	22.9k	17.0k	11.1k	5.1k	4.2k	3.4k	2.5k	1.7k	0.9k	0.9k	0.8k
100%	100%	100%	93%	86%	79%	72%	65%	54%	43%	32%	21%	10%	8%	6%	5%	3%	2%	2%	2%

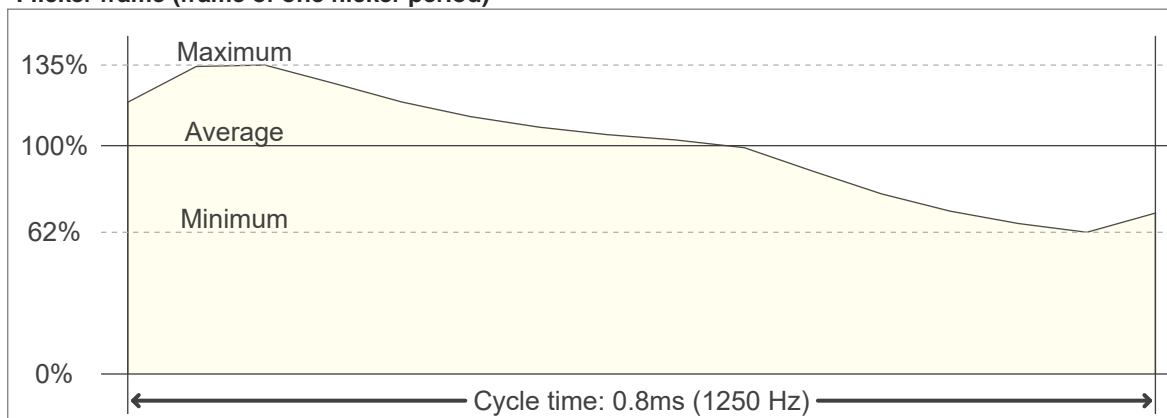
Beam angle 50%	Field angle 10%	Cutoff angle 2,5%	Intensity ratio in 120° cone	Intensity ratio in 90° cone
16.8°	23.9°	33°	48.5%	40.9%

# Flicker

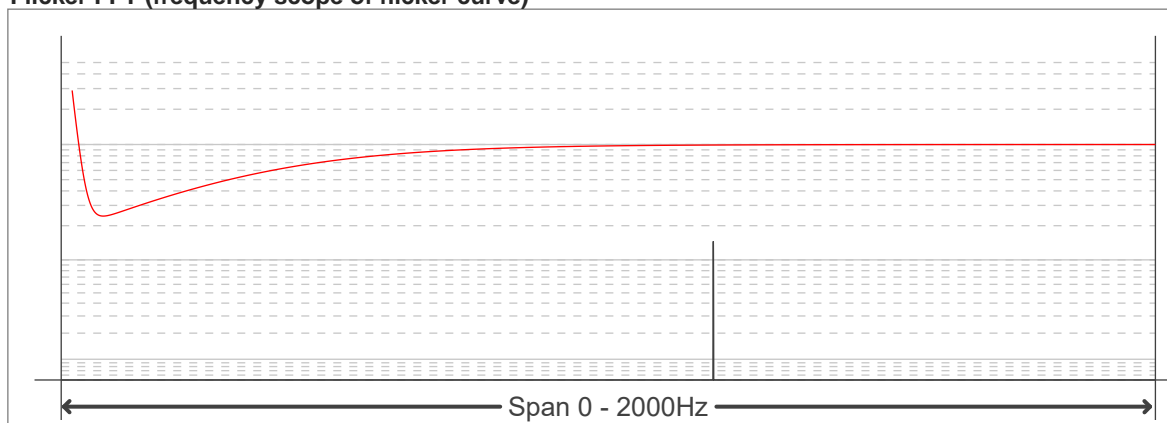
**Flicker curve (complete sampled flicker signal)**



**Flicker frame (frame of one flicker period)**



**Flicker FFT (frequency scope of flicker curve)**



**Flicker results:**

Flicker frequency:		1250 Hz	
Flicker index:	0.1	JA8/10 40Hz	0.17 %
Flicker percentage:	44.01 %	JA8/10 90Hz	0.17 %
SVM: (Visual flicker)	0.29	JA8/10 200Hz	0.18 %
PstLM	0	JA8/10 400Hz	0.4 %
Mp	0.11	JA8/10 1000Hz	3.33 %

**Flicker conditions:**

Sample rate:	20000 samples/second
--------------	----------------------